



Slow down and gather your peace: feel the stress disappear. Indulge yourself in each other, as you rediscover the pleasures of play, romance, and relaxation at Old Thyme Inn. Our decor is the perfect blending of the past and present, elegant but comfortable and casual, accented by the original plein air oil paintings of your innkeeper, Kathy. At day's end, slip between crisply ironed cotton sheets on a featherbed with a down comforter for a soothing and rejuvenating night's sleep. Awaken refreshed to a delectable full breakfast: farm-fresh eggs and organic local produce, specialty-grade coffee, and bread and breakfast cakes baked here at the Inn. As you step outside, breathe the fresh ocean breeze – and now it's time to explore!

Immerse yourself in the dramatic beauty that is the coast side. Let it envelop your soul as you comb breathtaking nearby beaches, visit giant redwoods, hike, bike, watch whales or birds, frolic in tide pools, ride horses, golf by the sea, or just stroll down Main Street, exploring the many unique shops and fascinating galleries that grace our charming and historic coastal village.

## Directions

**From San Francisco or San Francisco Airport (SFO)**, take either Hwy 101 or Hwy 280 South to Hwy 92 West (toward Half Moon Bay). Follow 92 until you enter Half Moon Bay (the only town on Hwy 92). The first light you come to is Main Street (Shell gas station on corner), turn left there, continue 6 blocks and look for the Inn on your left. **Driving distance from San Francisco: 28 miles, from SFO: 22 miles.**

**From San Jose and points South, take Hwy 101 or Hwy 280 North to Hwy 92 West (toward Half Moon Bay).** Follow 92 until you enter Half Moon Bay (the only town on Hwy 92). The first traffic light is Main Street (Shell gas station on corner), turn left there, continue 6 blocks and look for the Inn on your left. **Driving distance from San Jose (and Silicon Valley): approximately 45 miles.**

**From Santa Cruz, Monterey and points South on the Coastal Highway (Highway 1)**, follow Hwy 1 (Pacific Coast Highway) North till you see signs that you are entering Half Moon Bay. Look for signs pointing to "Historic Main Street" (you'll pass Half Moon Bay Lodge and Joe's Place On the Coast, 1/2 mile before the Main Street/Higgins-Purissima Road exit). Exit right onto Main Street, in about 4 blocks look for the Inn on your right. **Driving distance from Santa Cruz: 45 miles, from Monterey/Carmel-by-the-Sea: 100 miles.**



*An idyllic romantic getaway  
in Half Moon Bay, California*



*"The little cares that fretted me,  
I lost them yesterday.  
Among the fields above the sea,  
Among the winds at play..."*

- Elizabeth Barrett Browning



**800.720.4277**

779 Main Street  
Half Moon Bay, CA 94019  
[www.oldthymeinn.com](http://www.oldthymeinn.com)



## Our Food...

### Breakfast

Every morning begins with our delicious breakfast using local, fresh, and organic ingredients whenever possible. Breakfast is served from 8-9:30 am, Monday thru Friday and 8:30-10 am Saturday and Sunday in our dining area. The Garden Room's breakfast is served in the room. Each breakfast includes orange juice, fresh fruits or all-natural yogurt with fruit, home-baked coffee cakes or muffins, and your choice of Caffe Pronto™ coffee, Revolution™ premium teas, or Ghirardelli™ hot cocoa. Entrees alternate between sweet and savory. Our homemade granola is always available by request. We happily accommodate special dietary requirements, and offer a take-away breakfast.

### Afternoon Wine & Cheese

Relax with a glass of red or white California wine, sparkling pear cider, and scrumptious California cheeses. Meet and chat with your fellow guests or just see what's blooming in the garden.

## Rooms & Amenities

Each room includes a queen-size bed with hypo-allergenic feather bed, down pillows and comforter, crisply-ironed all cotton bed linens and beautiful Yves Delorme™ duvet covers, tv/vcr and complimentary wi-fi. Luxuriate in your private bath with EO™ bath products, Telegraph Hill™ robes, and hair dryer. Some rooms offer additional romantic touches such as a fireplace, whirlpool tub-for-two, or both.



**Garden - Upstairs**

Private entrance, Gas fireplace, Whirlpool tub-for-two & shower, Refrigerator with complimentary cheese & crackers and beverages



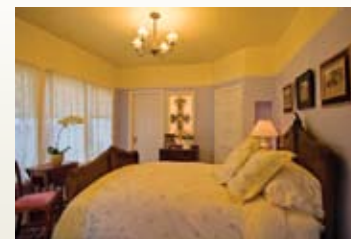
**Thyme - 1st floor**

Antique Louis XVI-style queen bed, Two-person whirlpool tub with European-style hand held shower, Gas fireplace, Sitting area



**Mint - Upstairs**

Brushed steel four-poster queen bed, Gas fireplace, Claw-foot tub with standard shower, sitting area



**Rosemary - 1st floor**

Antique Louis XV-style queen bed, Whirlpool tub-for-two with European-style hand-held shower, Stained glass window



**Oregano - Upstairs**

Sunny southern exposure, Antique French carved wood queen bed, Old-fashioned claw-foot tub and standard shower



**Chamomile - Upstairs**

Ceramic and brass queen bed, Old-fashioned claw-foot tub, European-style hand-held shower in tub



**Lavender - Upstairs**

White iron-framed queen bed, sitting area, Private full bath in room adjacent to bedroom, Standard shower in 6 foot tub

*Come Relax in Half Moon Bay at Old Thyme Inn!*